



students**first****TN**

2016 Tennessee School
Leader Survey
Results

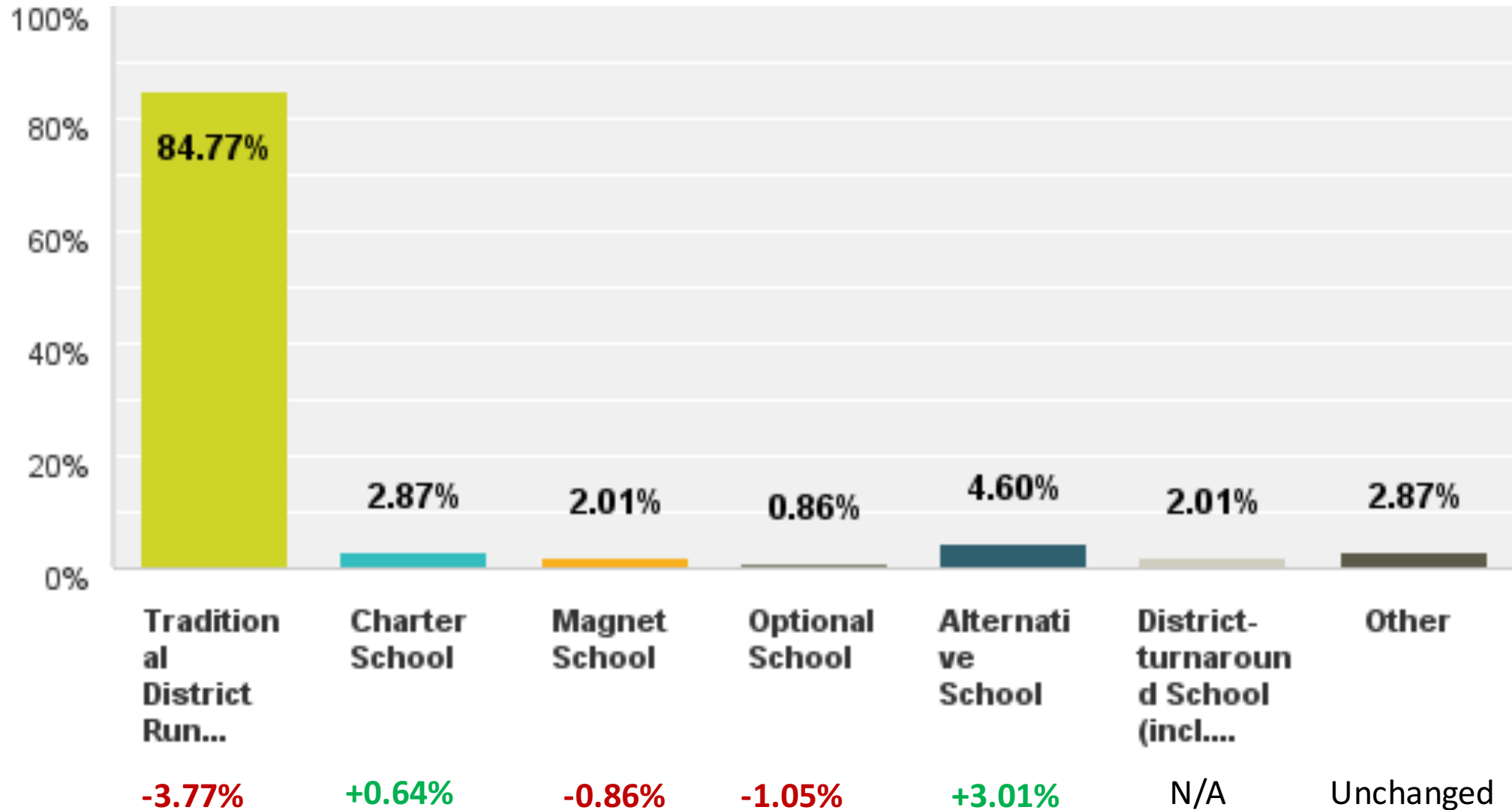
August 26, 2016

Survey Information

- Invitation to all current Tennessee School Principals via emailed survey
- Total Responses: 348 out of total 1811 (19.2%) **+9.8%** ^
 - 1730 email addresses found
 - 256 bounce-back
 - 32 opt-out
- Administered in July 2016 (compared to June 2015)
 - Student placement questions for the 2015 survey were administered in November 2015.

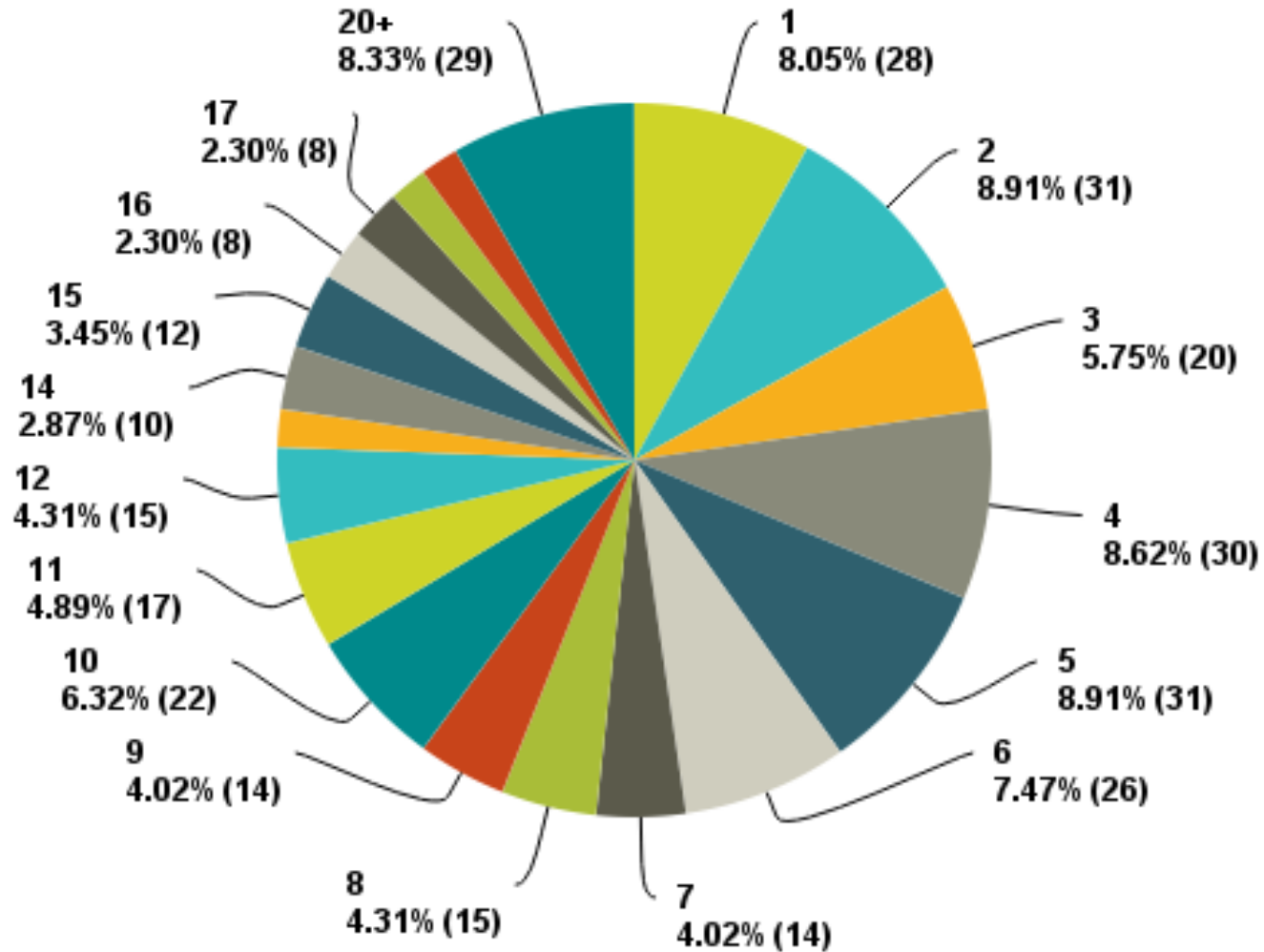
^2015 results are reflected as a percent increase or decrease year over year.

What type of school do you lead?

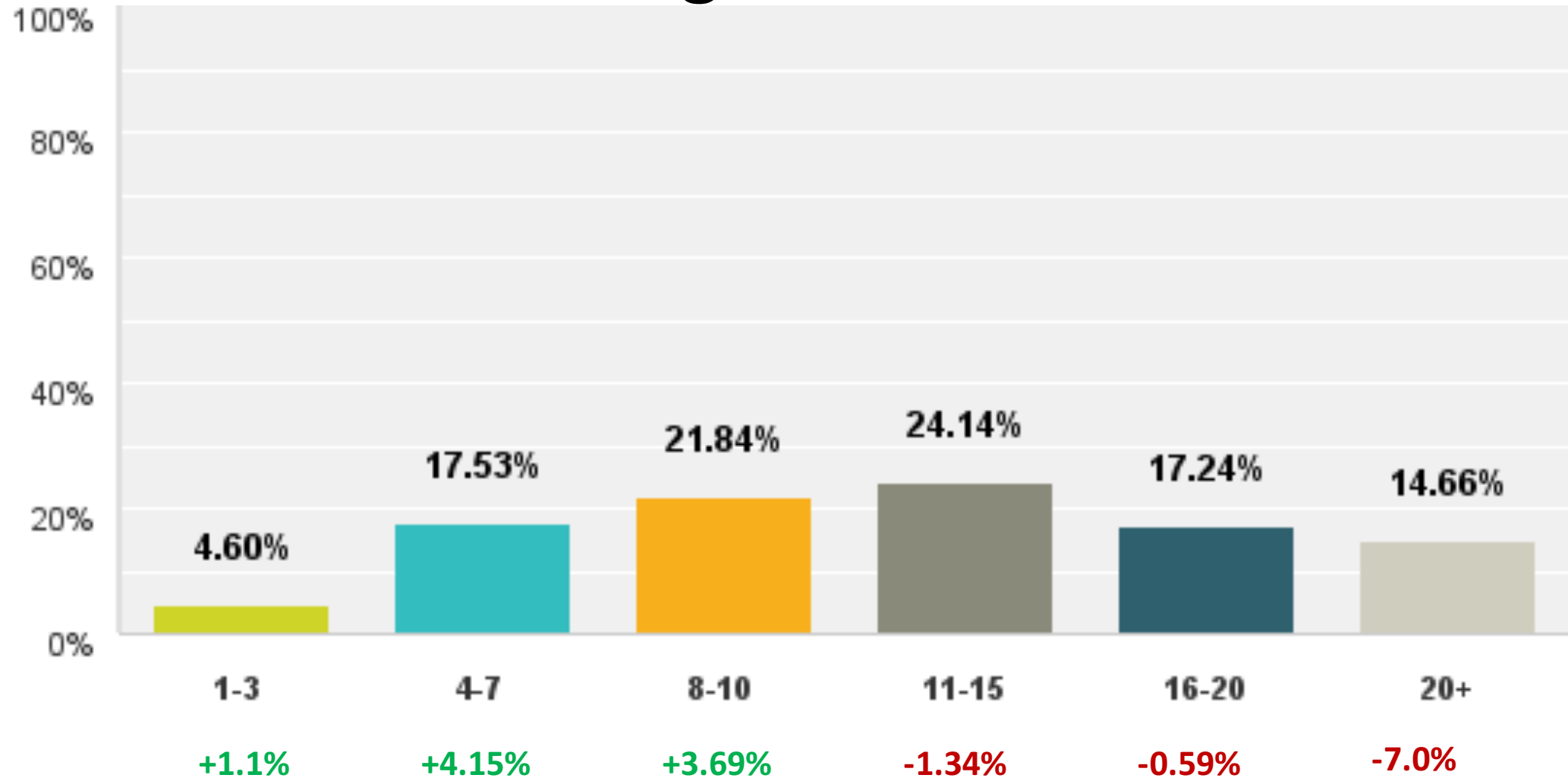


How many years have you been a principal?

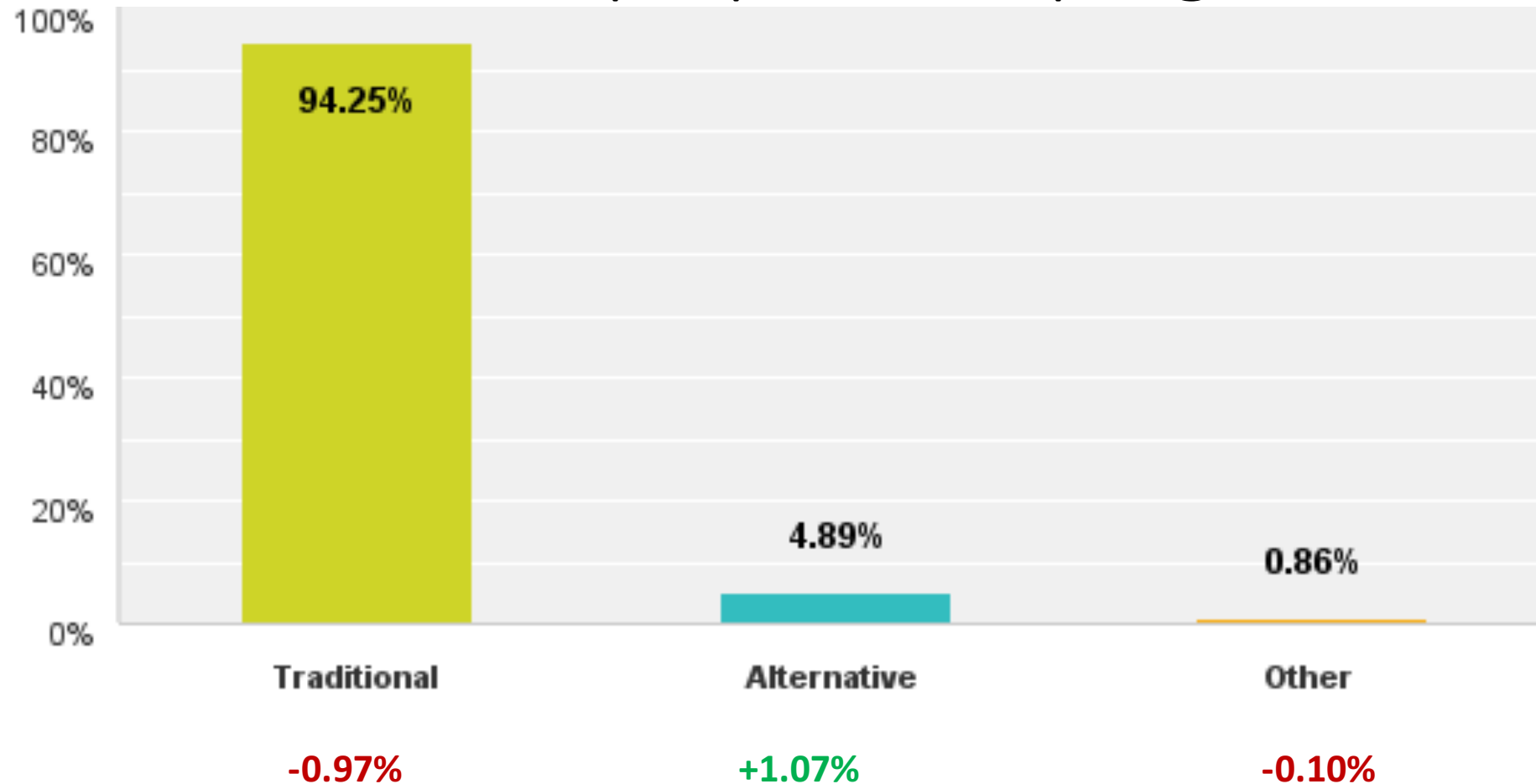
Since 2015, we had a slight reduction in principals of 3-5 years, but an increase in new (1-2 years) and long-term (20 years+) principals



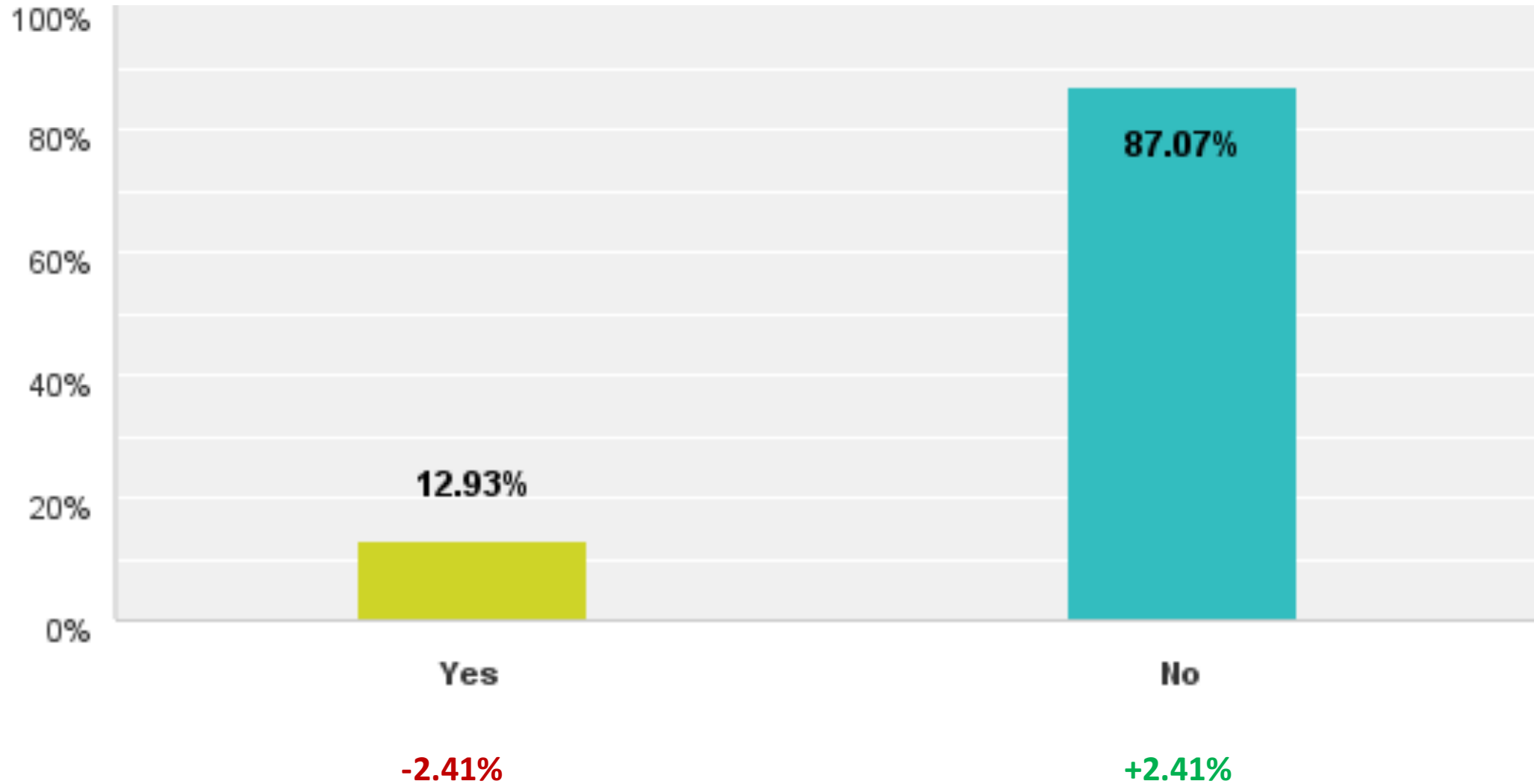
How many years did you teach prior to leading a school?



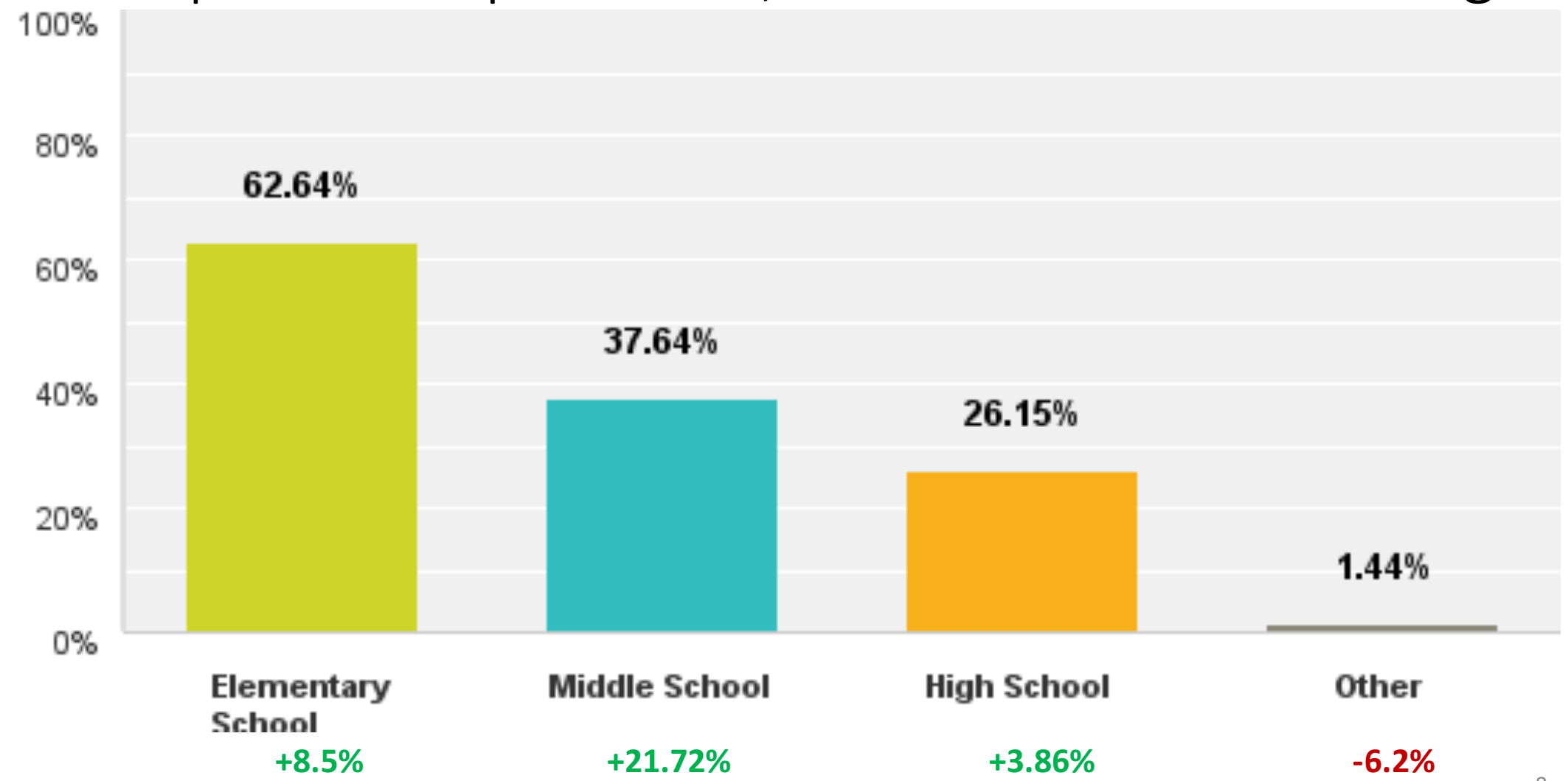
Were you educated and trained in a traditional or alternative preparation program?



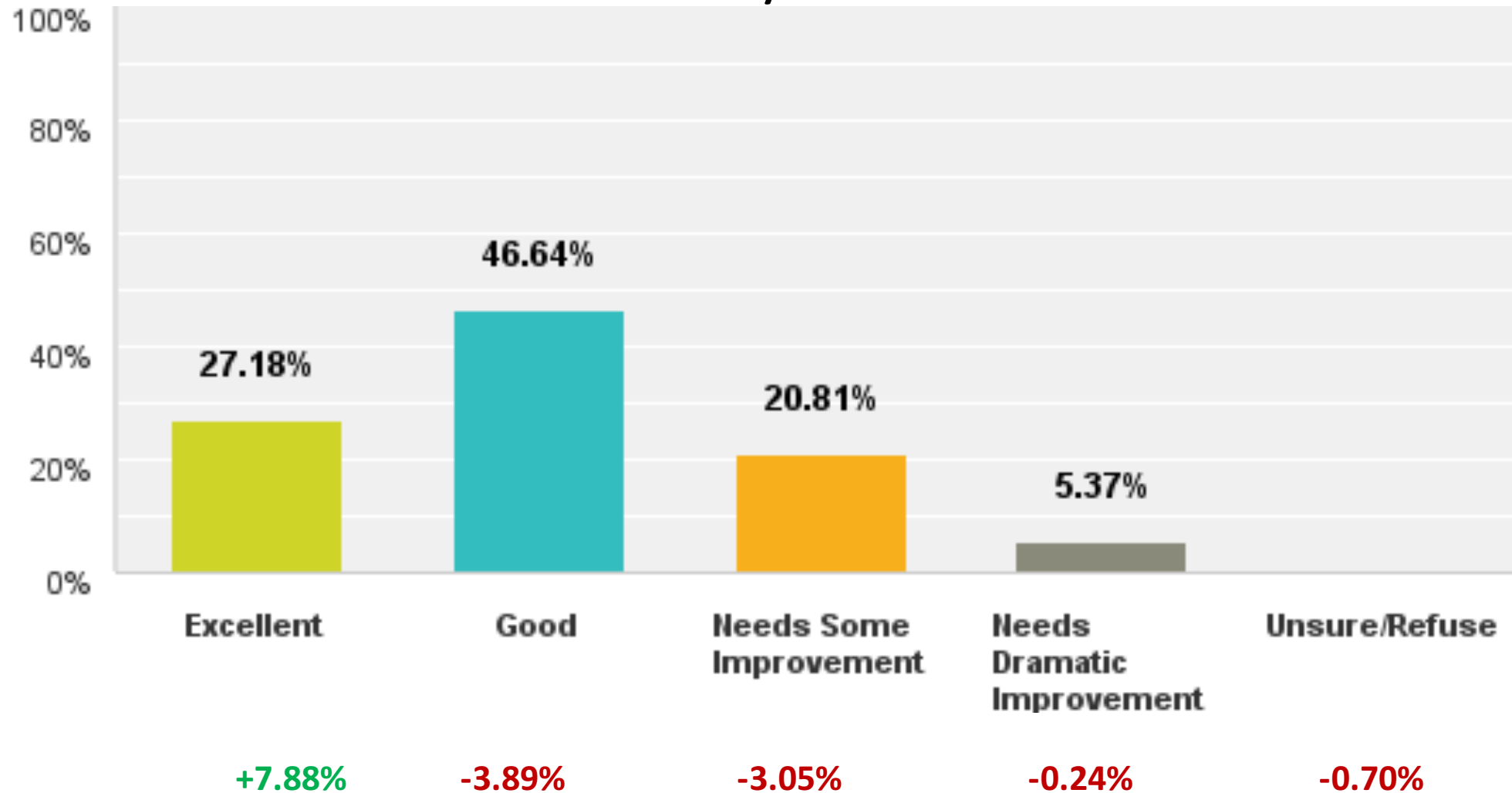
Have you ever taught or been a principal at a school in another state?



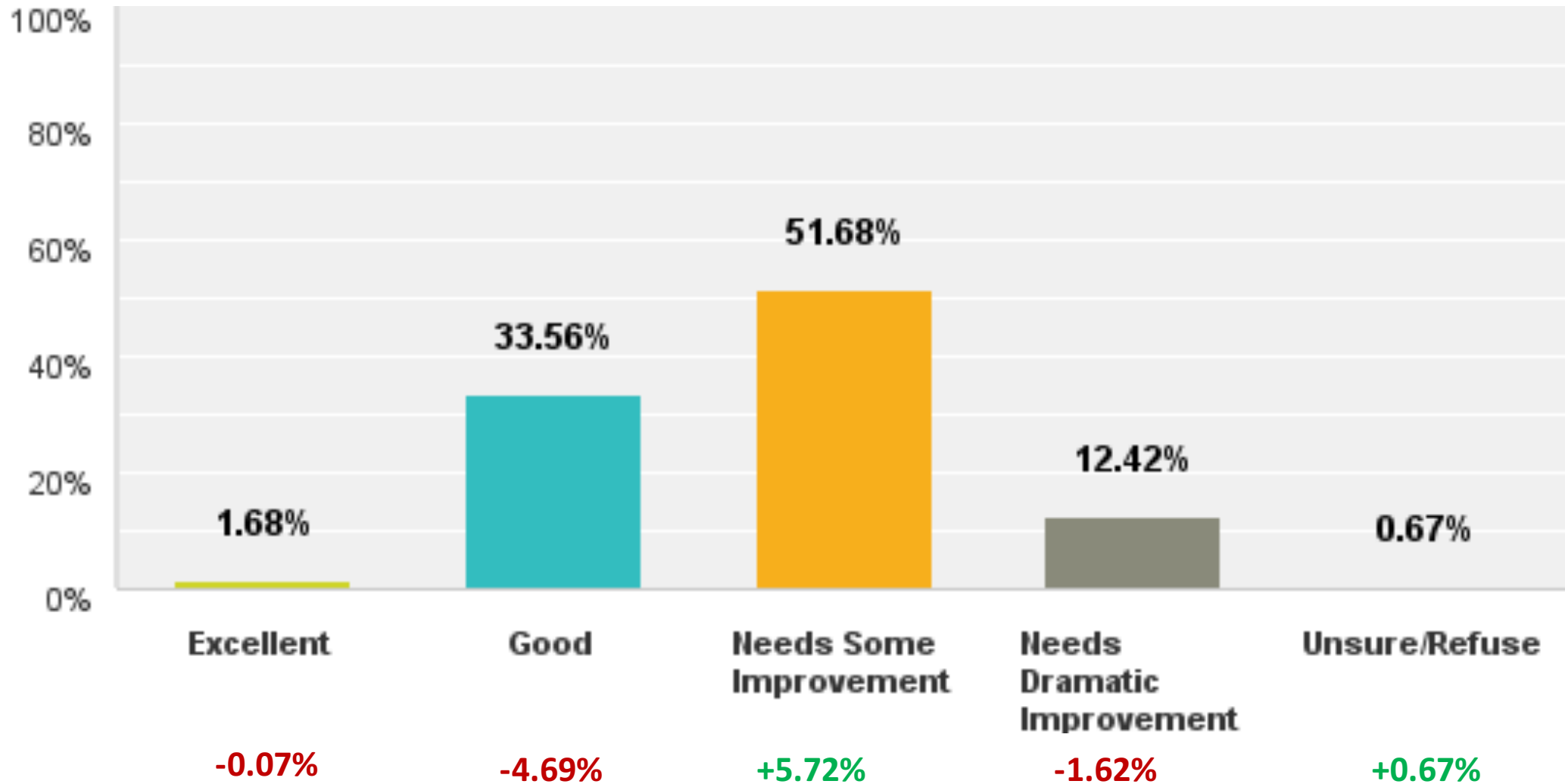
What grade level category does your school currently serve? (If your school spans multiple bands, choose all relevant categories.)



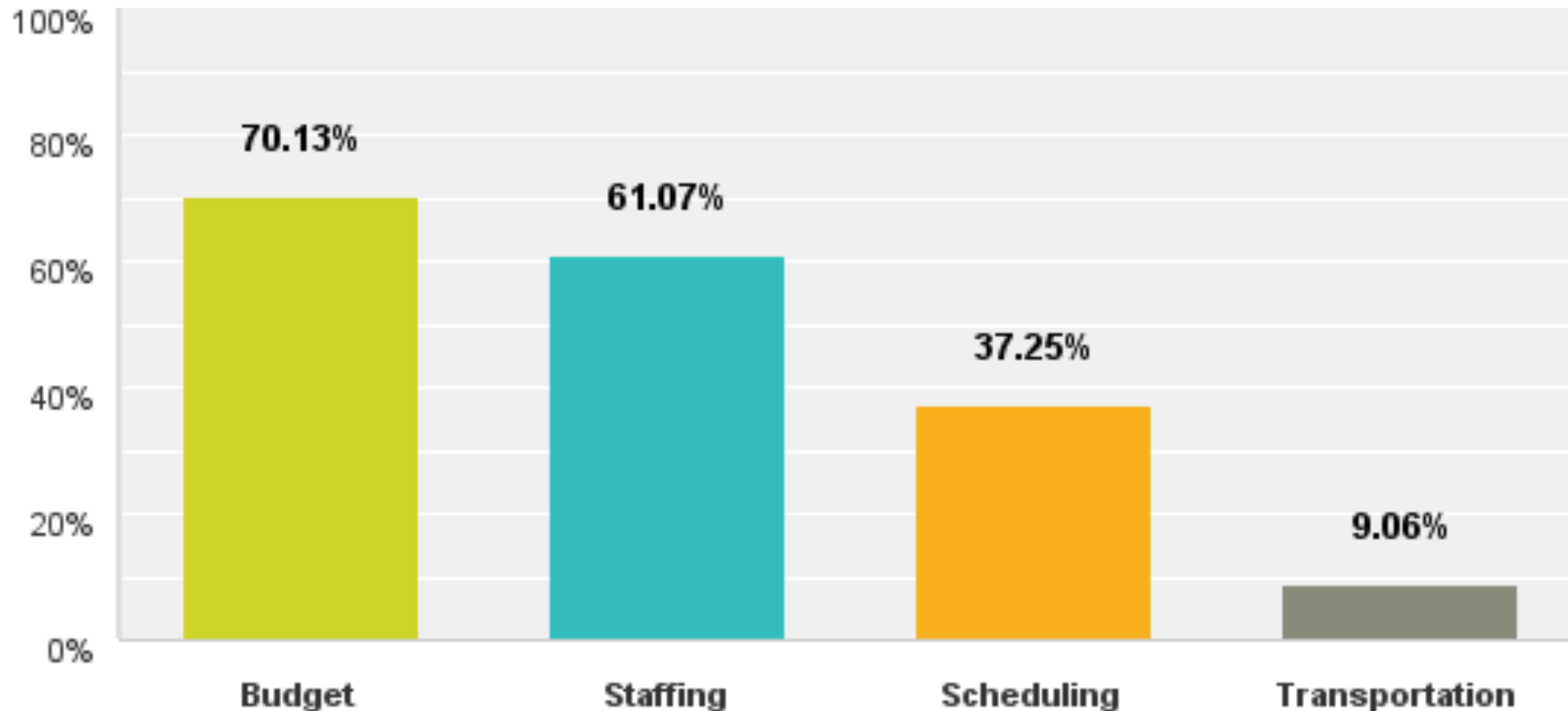
What is your current perception on the state of education in your school district?



What is your current perception on the state of education in TN as a whole?

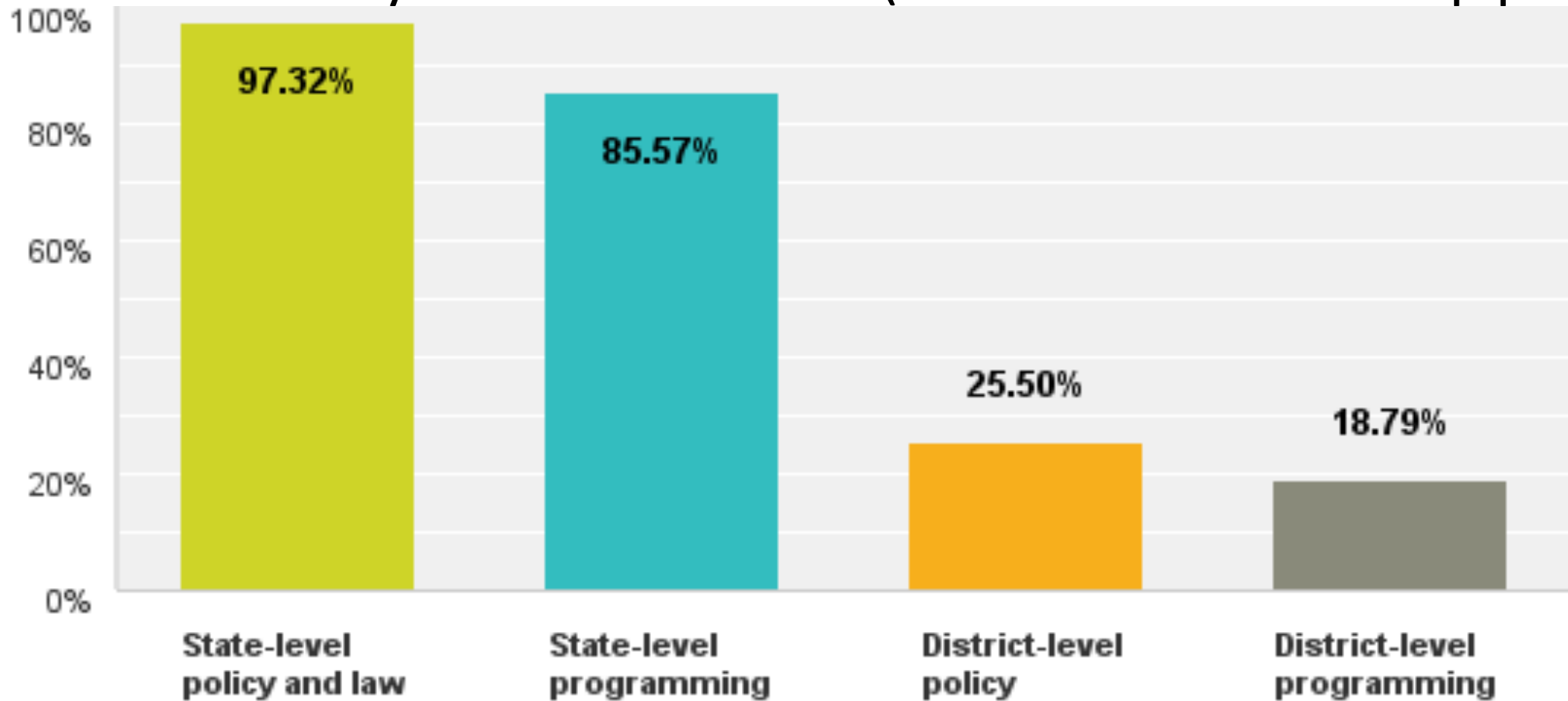


What limitations or constraints do you feel hinder your ability to reach the next level of success with students? (Check all that apply)



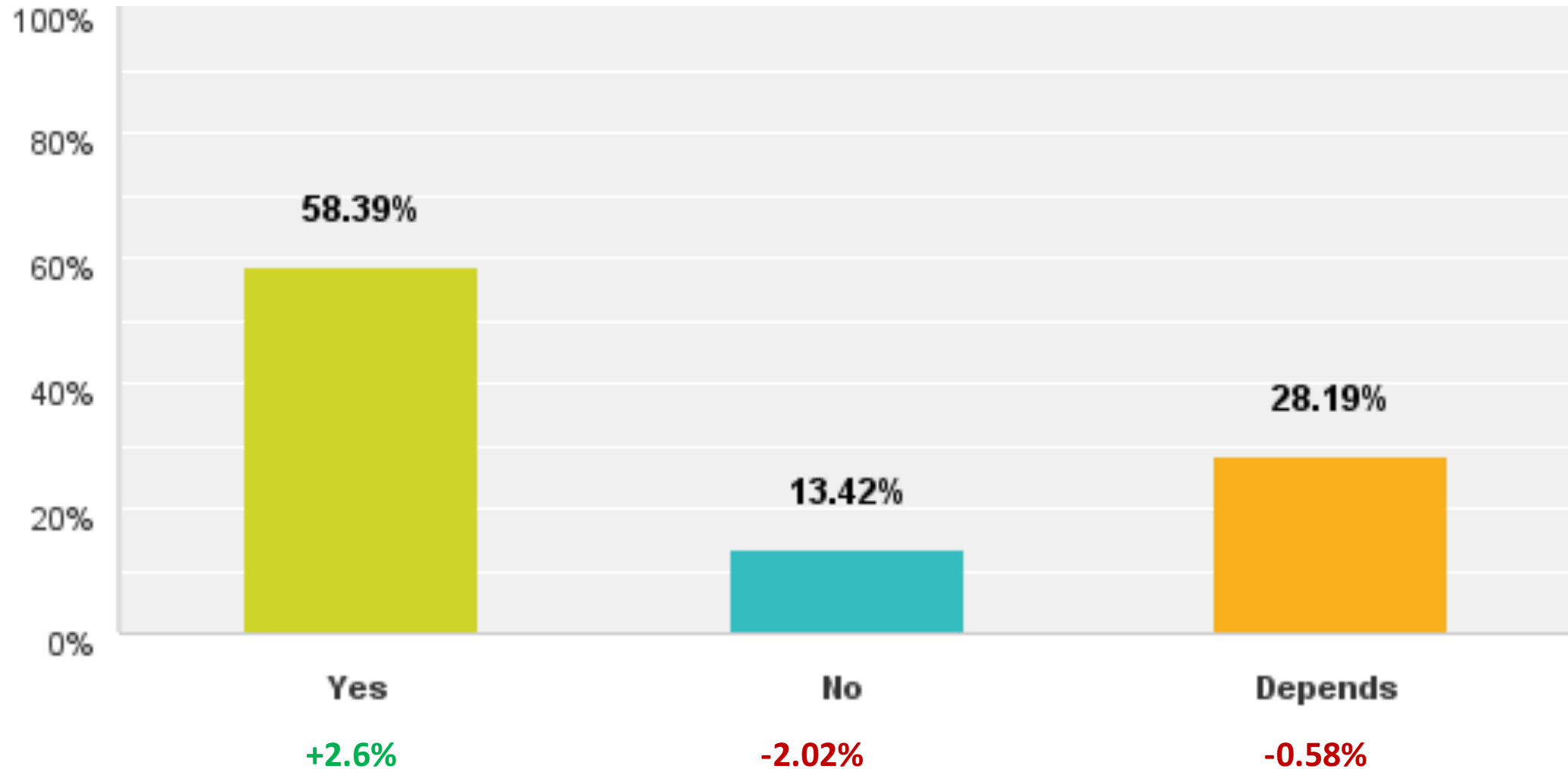
Note: In 2015, question was asked as an open-ended question. The four categories listed above were those most frequently cited in responses.

What areas of your work do you feel are outside of your control? (Check all that apply)

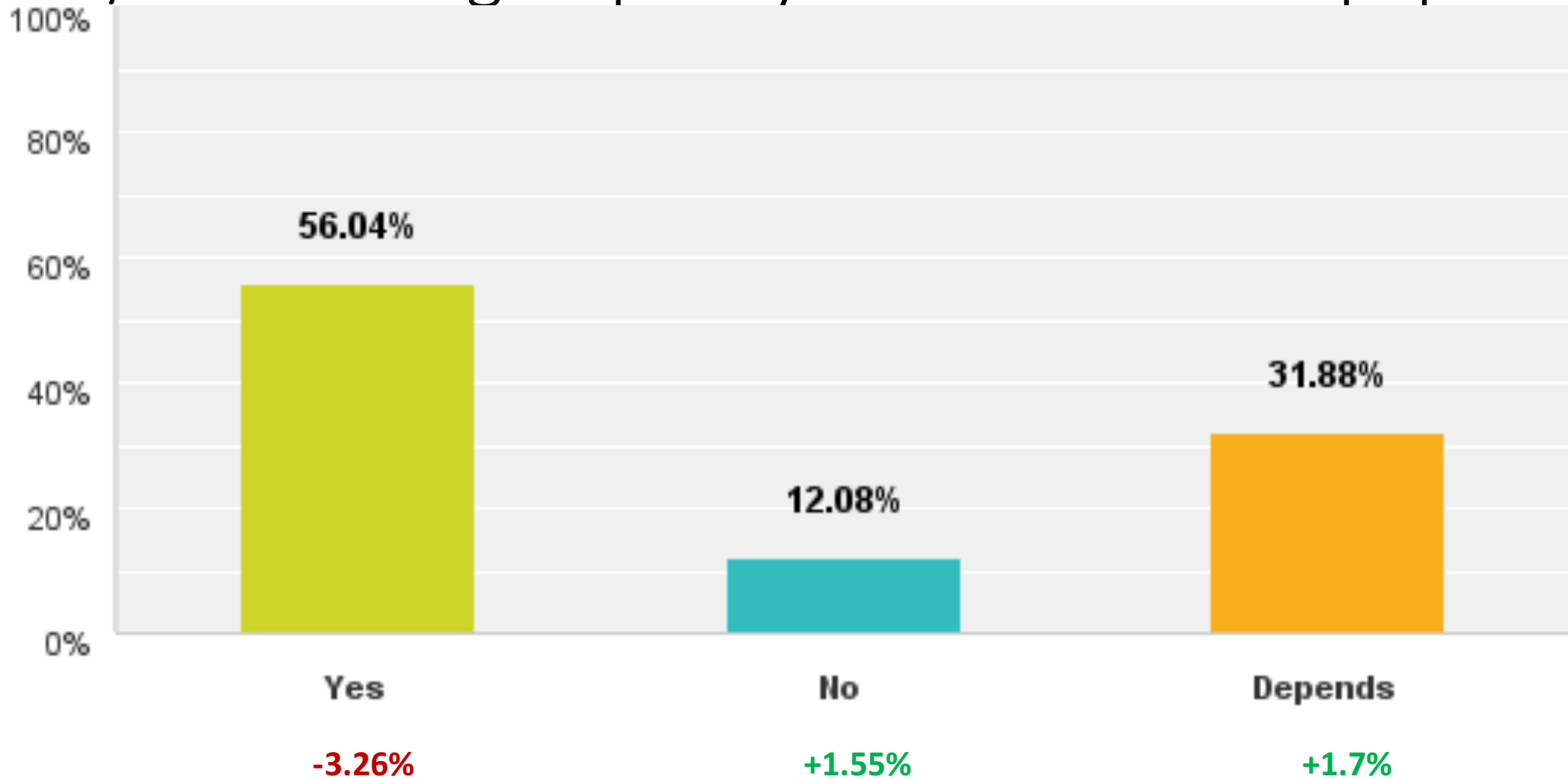


Note: In 2015, question was asked as an open-ended question. The four categories listed above were those most frequently cited in responses.

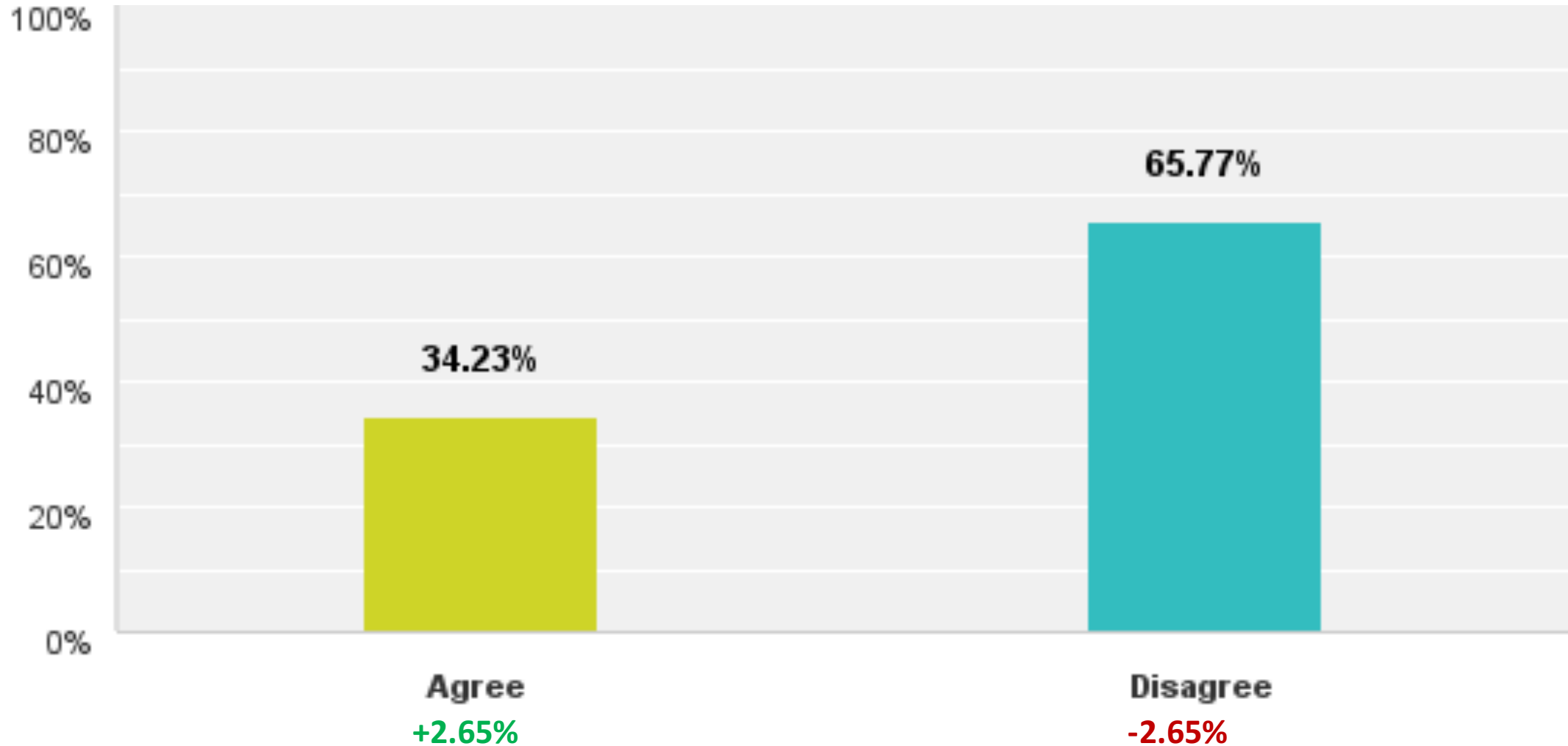
Do you have the resources and support from your LEA/District to attract and retain quality teachers?



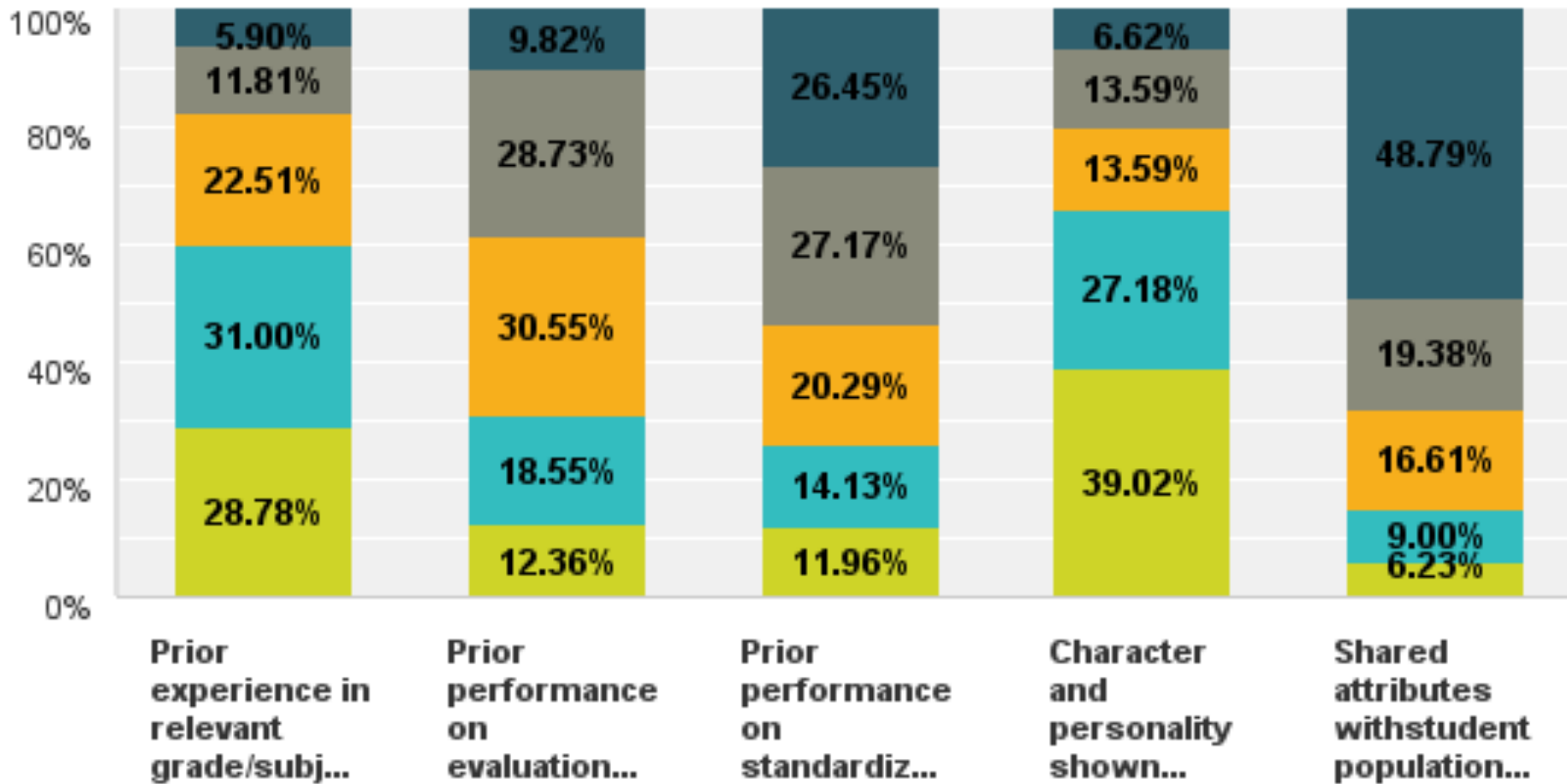
Do you have the resources and support from your LEA/District to get quality materials and equipment?



Do you agree or disagree: teachers have enough time in their day and school year to meet the needs of our students?



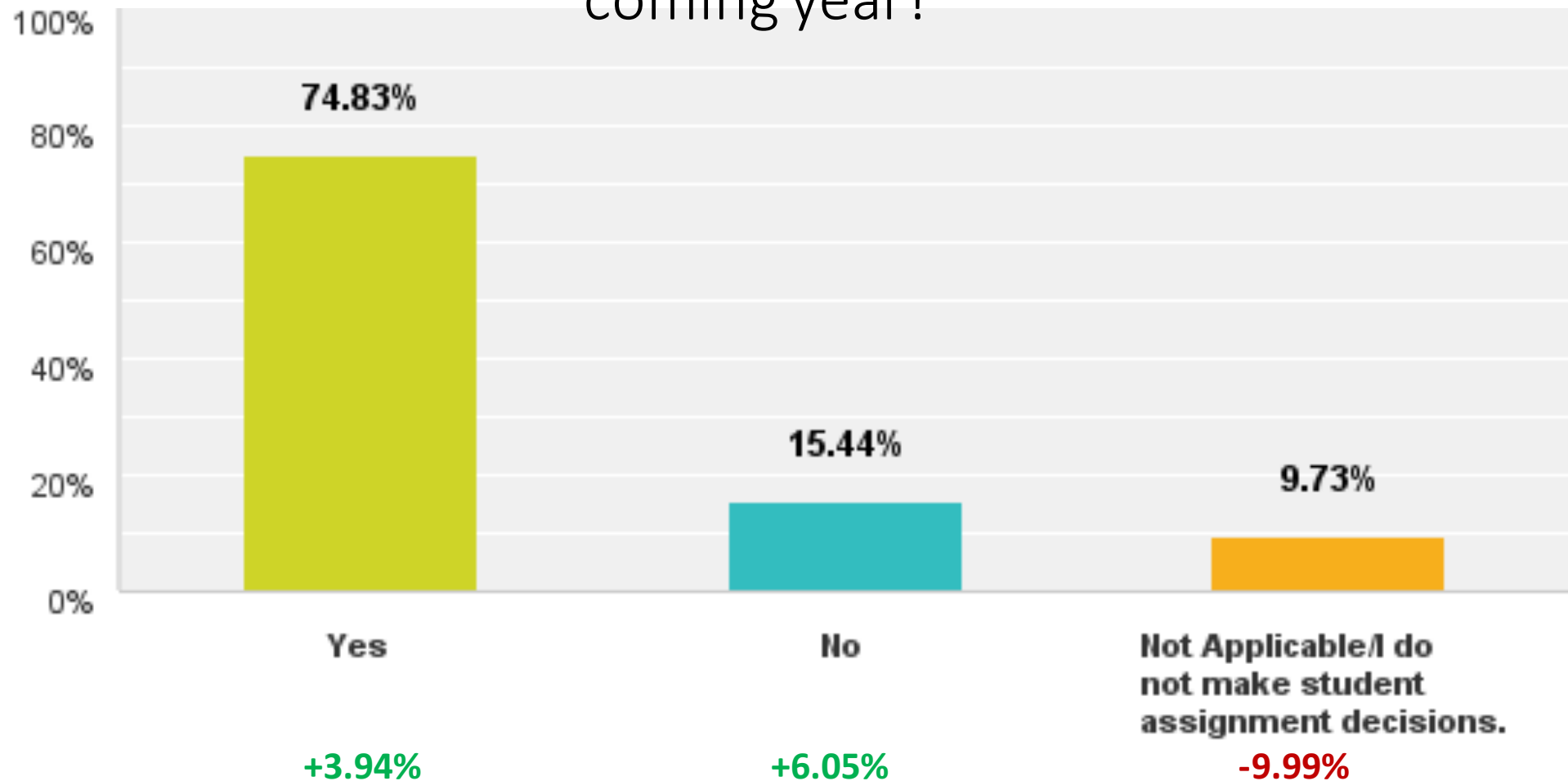
When hiring new instructional staff, which primary factors do you consider to determine qualification?



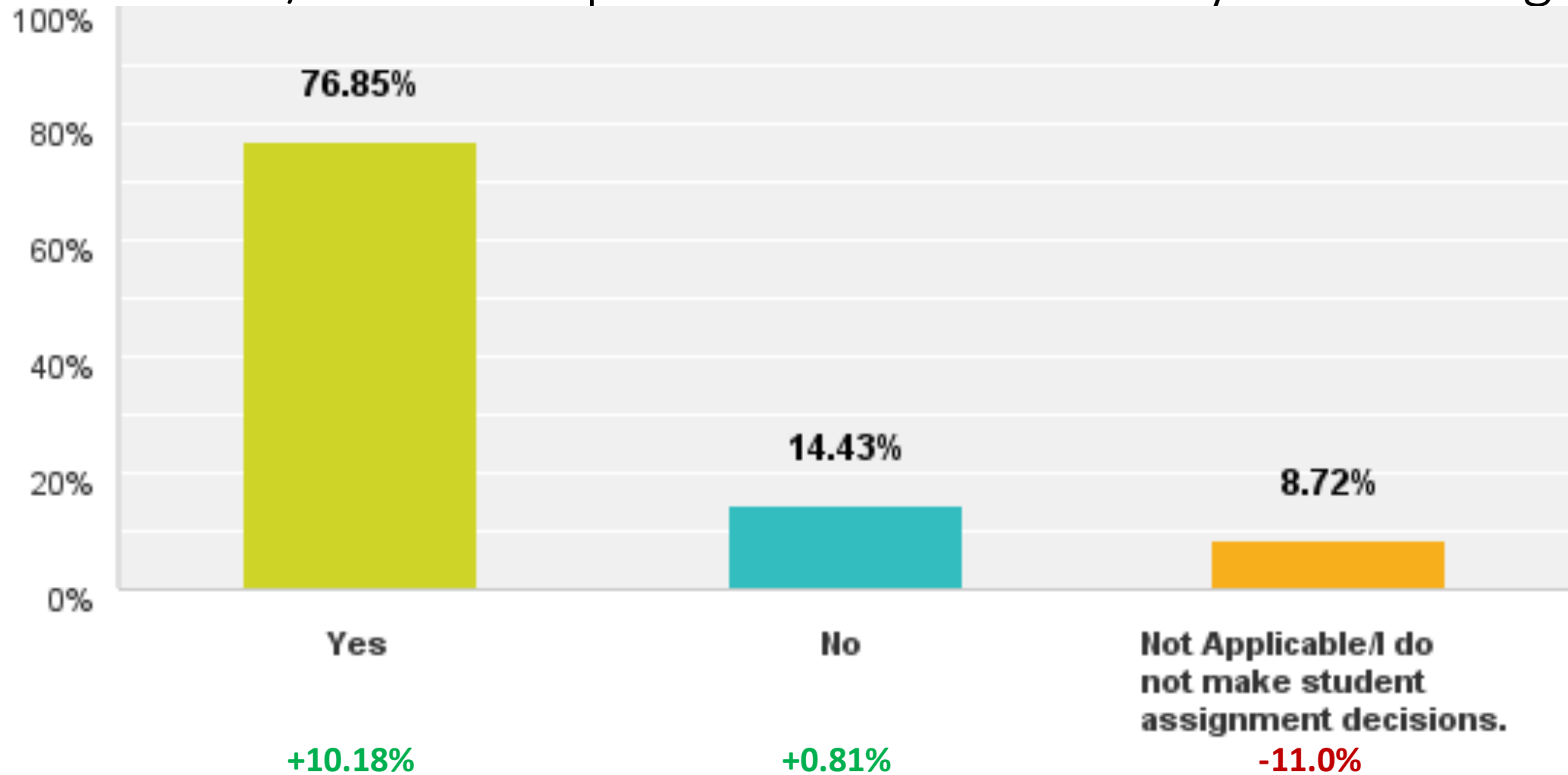
■ 1
 ■ 2
 ■ 3
 ■ 4
 ■ 5*

*Rank is in order from 1-most important to 5-least important.
 Note: Question was not asked in 2015 survey.

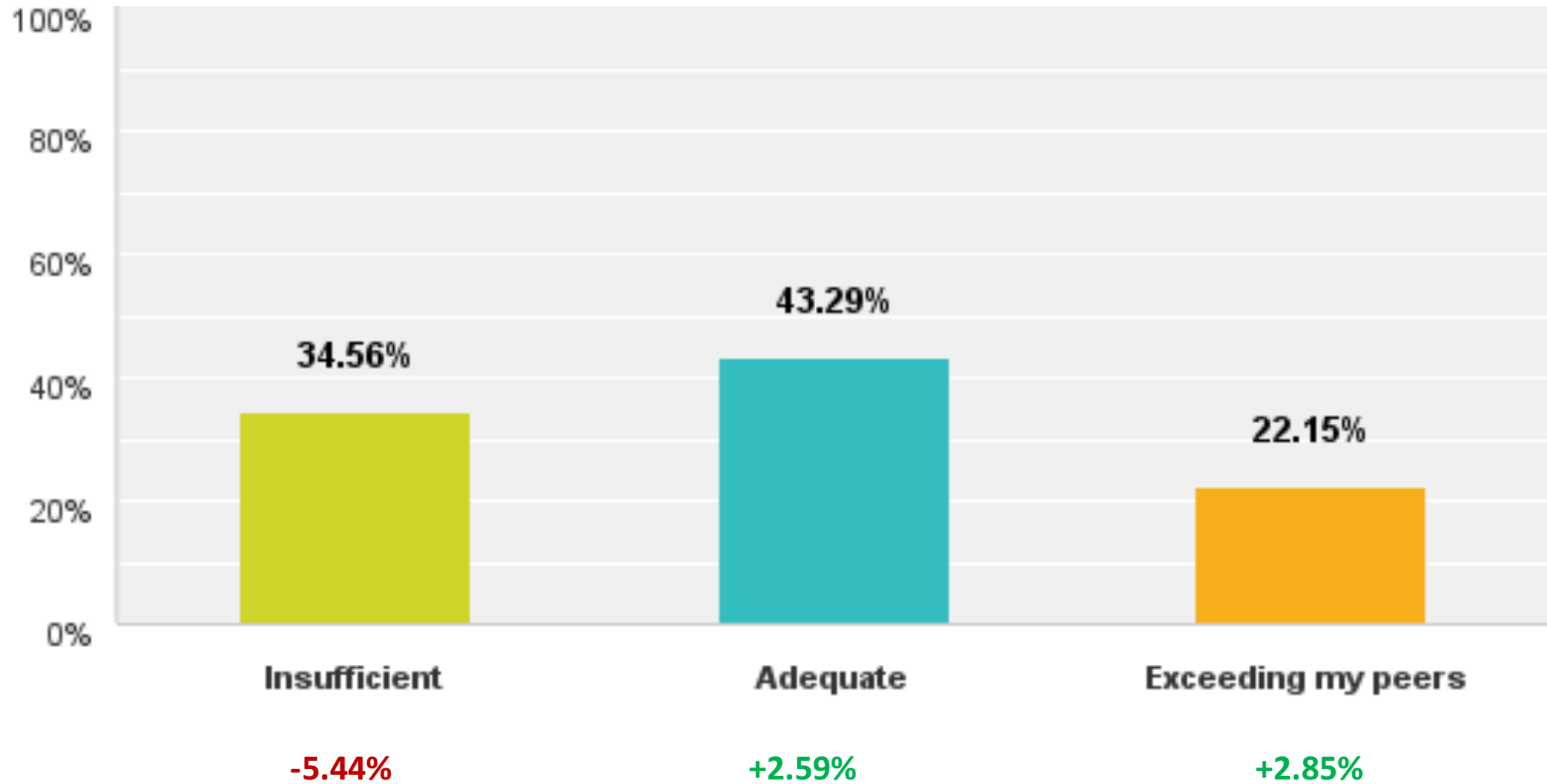
When assigning students to classrooms, do you consider the effectiveness of the teacher/classroom the student had the previous year relative to the effectiveness of the teacher/classroom you would place them in for the coming year?



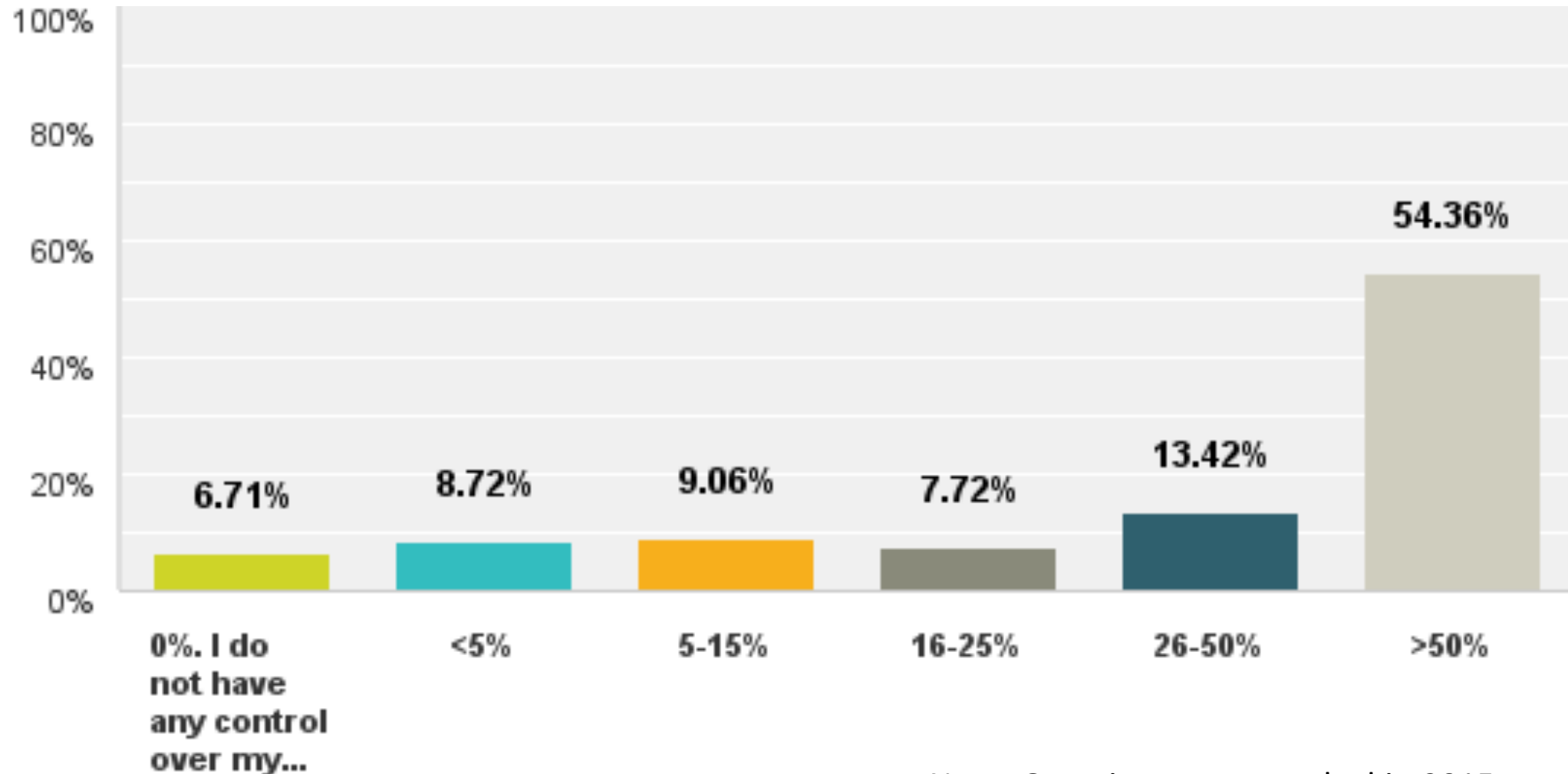
When assigning students to classrooms, do you give consideration to the student's individual achievement levels from the previous year relative to the teacher/classroom performance where they will be assigned?



I think parent involvement in my school is...



What control (as a %) do you have over your school operating budget?



Note: Question was not asked in 2015 survey. 20

Takeaways

- Principals have a more positive perception of their district than the state as a whole. A greater number of respondents in 2016 saw their district as excellent than in 2015, while more 2016 respondents saw the state needing some improvement than in 2015.
- Budget and Staffing continue to be the greatest perceived constraints for principals, while principals perceive state-level policies and programming to be most out of their control.
- Principals consider character, personality, and prior experience of an applicant teacher over prior performance or shared attributes with students.
- While more principals felt they had autonomy to assign students to classrooms, a greater number did not consider prior student or teacher performance when making those decisions.
- Perceived parent involvement continues to improve year over year.

About StudentsFirst Tennessee:

We're a nonpartisan, nonprofit K-12 education group working to ensure that every child in Tennessee has great teachers and great schools. Established in Tennessee in 2011, our work is aimed at increasing the number of high-quality school choices that are available, empowering parents with accessible and transparent information, and ensuring every student has access to great teachers and great schools.

More information is available at studentsfirst.org/tennessee.

For more detailed survey information, including data from open-ended responses, or for other inquiries please contact Daniel Zavala, Deputy Director, at dzavala@studentsfirst.org.